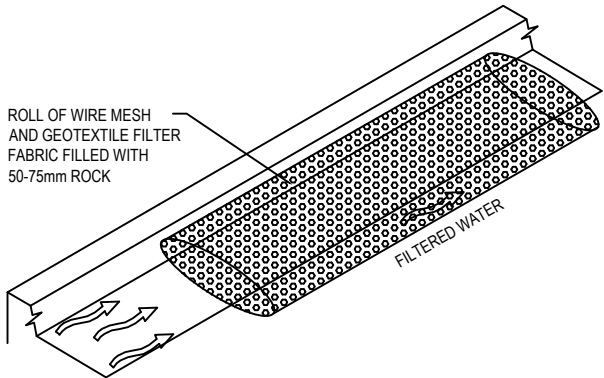


SEDIMENT FENCE DETAIL

CONSTRUCTION NOTES:

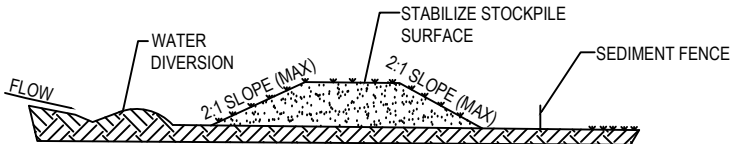
1. CONSTRUCT SEDIMENT FENCES AS CLOSE AS POSSIBLE TO BEING PARALLEL TO THE CONTOURS OF THE SITE, BUT WITH SMALL RETURNS AS SHOWN IN THE DRAWING TO LIMIT THE CATCHMENTS AREA OF ANY ONE SECTION. THE CATCHMENTS AREA SHOULD BE SMALL ENOUGH TO LIMIT WATER FLOW IF CONCENTRATED AT ONE POINT TO 50 LITRES PER SECOND IN THE DESIGN STORM EVENT, USUALLY THE 10 YEAR EVENT.
2. CUT A 150mm DEEP TRENCH ALONG THE UPSLOPE LINE OF THE FENCE FOR THE BOTTOM OF THE FABRIC TO BE ENTRENCHED.
3. DRIVE 1.5m LONG STAR PICKETS INTO GROUND AT 2.5m INTERVALS (MAX) AT THE DOWNSLOPE EDGE OF THE TRENCH. ENSURE ANY STAR PICKETS ARE FITTED WITH SAFETY CAPS.
4. FIX SELF-SUPPORTING GEOTEXTILE TO THE UPSLOPE SIDE OF THE POSTS ENSURING IT GOES TO THE BASE OF THE TRENCH. FIX THE GEOTEXTILE WITH WIRE TIES OR AS RECOMMENDED BY THE MANUFACTURER. ONLY USE GEOTEXTILE SPECIFICALLY PRODUCED FOR SEDIMENT FENCING. THE USE OF SHADE CLOTH FOR THIS PURPOSE IS NOT SATISFACTORY.
5. JOIN SECTIONS OF FABRIC AT A SUPPORT POST WITH 150mm OVERLAP.
6. BACKFILL THE TRENCH OVER THE BASE OF THE FABRIC AND COMPACT IT THOROUGHLY OVER THE GEOTEXTILE.



MESH AND GRAVEL FILTER

CONSTRUCTION NOTES:

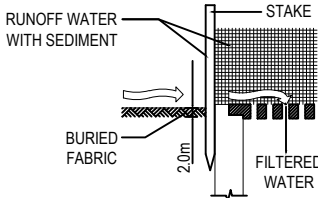
1. INSTALL FILTERS TO KERB INLETS ONLY AT SAG POINTS
2. FABRICATE A SLEEVE MADE FROM GEOTEXTILE OR WIRE MESH LONGER THAN THE LENGTH OF THE INLET PIT AND FILL IT WITH 25mm TO 50mm GRAVEL.
3. FORM AN ELLIPTICAL CROSS-SECTION ABOUT 150mm(h) x 400mm(w).
4. PLACE THE FILTER AT THE OPENING LEAVING AT LEAST 100mm SPACE BETWEEN IT AND THE KERB INLET. MAINTAIN THE OPENING WITH SPACER BLOCKS.
5. FORM A SEAL WITH THE KERB TO PREVENT SEDIMENT BYPASSING THE FILTER.
6. SANDBAGS FILLED WITH GRAVEL CAN SUBSTITUTE FOR THE MESH OR GEOTEXTILE PROVIDING THEY ARE PLACED SO THAT THEY FIRMLY ABUT EACH OTHER AND SEDIMENT-LADEN WATERS CANNOT PASS BETWEEN.



STOCKPILE

NOTE:

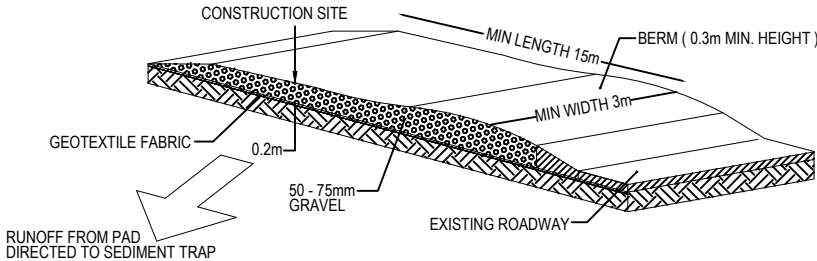
1. PLACE STOCKPILES MORE THAN 2 (PREFERABLY 5) METRES FROM EXISTING VEGETATION, CONCENTRATED WATER FLOW, ROADS AND HAZARD AREAS.
2. CONSTRUCT ON THE CONTOUR AS LOW, FLAT, ELONGATED MOUNDS.
3. WHERE THERE IS SUFFICIENT AREA, TOPSOIL STOCKPILES SHALL BE LESS THAN 2 METRES IN HEIGHT.
4. WHERE THEY ARE TO BE IN PLACE FOR MORE THAN 10 DAYS, STABILIZE FOLLOWING THE APPROVED ESCP OR SWMP TO REDUCE THE C-FACTOR TO LESS THAN 0.10.
5. CONSTRUCT EARTH BANKS (LOW FLOW) ON THE UPSLOPE SIDE TO DIVERT WATER AROUND STOCKPILES AND SEDIMENT FENCES 1 TO 2 METRES ON THE DOWNSLOPE.



SEDIMENT BARRIER AROUND PIT

CONSTRUCTION NOTES:

1. FABRICATE A SEDIMENT BARRIER MADE FROM GEOTEXTILE OR STRAW BALES.
2. FOLLOW STRAW FILTER AND SEDIMENT FENCE FOR INSTALLATION PROCEDURES FOR THE STRAW BALES OR GEOFABRIC. REDUCE THE PICKET SPACING TO 1 METRE CENTRES.
3. IN WATERWAYS, ARTIFICIAL SAG POINTS CAN BE CREATED WITH SANDBAGS OR EARTH BANKS AS SHOWN IN THE DRAWING.
4. DO NOT COVER THE INLET WITH GEOTEXTILE UNLESS THE DESIGN IS ADEQUATE TO ALLOW FOR ALL WATERS TO BYPASS IT.



STABILIZED SITE ACCESS

CONSTRUCTION NOTES:

1. STRIP THE TOPSOIL, LEVEL THE SITE AND COMPACT THE SUBGRADE
2. COVER THE AREA WITH NEEDLE-PUNCHED GEOTEXTILE
3. CONSTRUCT A 200mm THICK PAD OVER THE GEOTEXTILE USING ROAD BASED OR 30mm AGGREGATE
4. ENSURE THE STRUCTURE IS AT LEAST 15m LONG OR TO BUILD ALIGNMENT AND AT LEAST 3 METRES WIDE.
5. WHERE A SEDIMENT FENCE JOINS ONTO THE STABILIZED ACCESS, CONSTRUCT A HUMP IN THE STABILIZED ACCESS TO DIVERT WATER TO THE SEDIMENT FENCE.

REV. NO.	DESCRIPTION TO REVISION	REV. BY	DATE
A	ISSUE FOR DA	A.E	07/05/2025

GENERAL NOTES

Figured dimensions & larger scale drawings shall be taken in preference to scaled readings.

Check all dimensions and levels on site before commencement of work or ordering materials.

All workmanship and materials shall comply with all relevant codes, ordinances, Australian standards and manufacturer's instructions.

All discrepancies shall be brought to the attention of AKT Engineering& Consulting P/L

Copyright of the material shown hereon & in the accompanying CAD files / drawing sheets vests with AKT Engineering& Consulting P/L.

AKT Engineering&Consulting P/L warrants only the original architectural data as retained by the company. The data files are not to be altered without the written approval of AKT Engineering&Consulting P/L.

The responsibility of AKT Engineering&Consulting P/L is removed if these conditions are not observed.

ARCHITECTURAL DESIGNERS
CIVIL & STRUCTURAL ENGINEERS
NATHERS & BASIX ASSESSORS
CONSTRUCTION CERTIFICATES
ACCREDITED CERTIFIERS
PROJECT MANAGERS

3A/549-553 WOODVILLE ROAD
GUILDFORD NSW 2161
TEL: 02 8005 6525
MOB: 04 268 148 98
WWW.AKTENGINEERING.COM.AU
INFO@AKTENGINEERING.COM.AU



CUSTOMER

PROJECT

11 CURTIS ROAD
CHESTER HILL, NSW
LOT A D.P 410761

TITLE: SEDIMENT CONTROL SECTION DETAILS

PROJECT PORTION

AL MINIA CHARTIABLE ASSOCIATION

CHECKED PROPOSAL APPROVED PROPOSAL CLIENT APPROVED ENGINEER APPROVED

DRAWN BY: A.E SCALE 200 A3 JOB No: 24057

DRG No: D7

REV: A